

Residence Admin. Bldg. A1001  
8888 University Drive, Burnaby, BC  
Canada V5A 1S6

TEL 778.782.4503  
FAX 778.782.5598

stayhere@sfu.ca  
www.sfu.ca/stayhere

### **ACCOMMODATION RATES AND AVAILABILITY**

All rates are non-commissionable. As a public institution SFU does not pay commission.

#### **The Simon Hotel**

<b>Dates</b>	<b>Queen</b>		<b>Queen/Sofa</b>		<b>Estimated Cost (before tax)</b>
<i>Special Wedding Rate</i>	Rate	Availability	Rate	Availability	
July 22-23, 2016	\$95.00	5	\$115.00	1	TBD

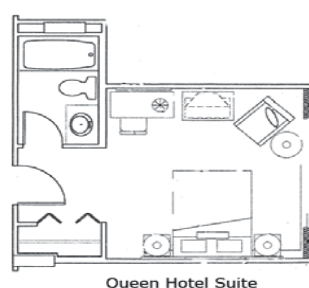
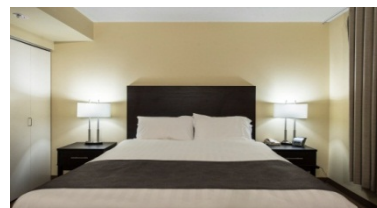
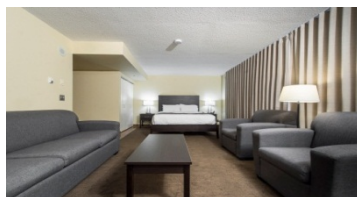
Rates include 1 parking permit per Queen and up to 2 for Queen/Sofa

Rates include daily towel service, linen changed every 4<sup>th</sup> day.

All guest rooms subject to applicable taxes.

#### *The Simon Hotel: 14 Deluxe Rooms*

Situated on the top floor of the residential tower, the Simon Hotel offers panoramic views from Mount Baker in Washington State, the San Juan Islands, Vancouver Island, the Strait of Georgia and the North Shore Mountains. Rooms range in size from 250 to 400 square feet with either one queen bed, or one queen plus double sofa bed. Amenities in rooms include alarm clocks, *Keurig* coffee & tea brewing machine, kettle, mini fridge, hairdryers, umbrella, TV/DVD, telephone and wireless Internet access.



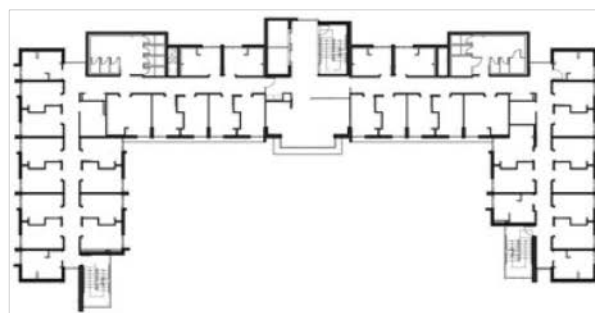
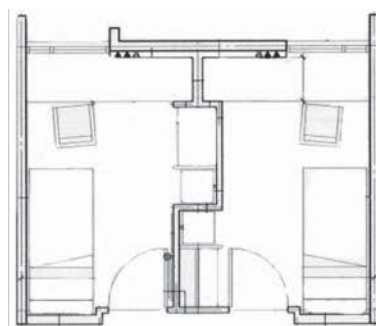
## Private Residence Room

Date Range	Per Single Bed – Shared Bathroom		Estimated Cost (before tax)
	Rate per night	Availability	
July 22-23, 2016	\$40.00	10	TBD

Guest rooms do not include parking and are subject to applicable taxes.

Rates include towel service every other day, linen changed every 4<sup>th</sup> day and high speed wired internet.

Traditional residence style housing is perfect for travelers on a budget, teams, groups or visitors looking for an on-campus housing alternative. Rooms are single occupancy with bed linens, towels and shared bathrooms. Each room is furnished with an extra-long (78 inch) single bed, a dresser, a built-in desk, a task chair, bookshelves, a small fridge and a closet. Each room is wired with high speed internet. There are universally-accessible sleeping rooms and bathrooms located on each floor. Ideal as a casual meeting space for groups or a place to relax with friends, traditional style residence towers have community lounges with TV, DVD player and microwave. Laundry facilities are located in each building.



## Townhouse Quads – 4 single rooms per unit

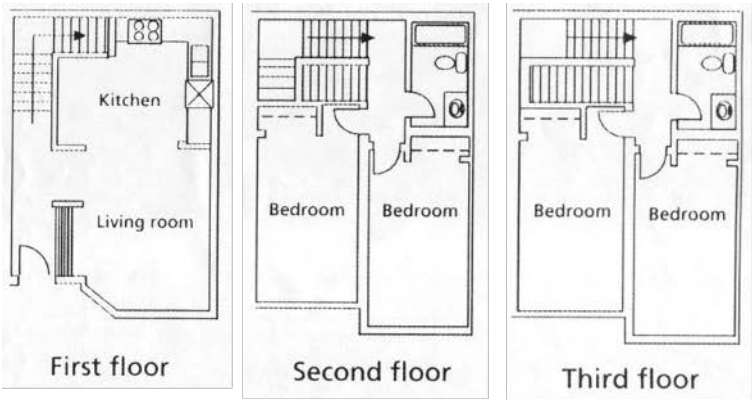
Date Range	Per Unit		Estimated Cost (before tax)
	Rate per night	Availability	
July 22-23, 2016	\$155.00	1 units (4 rooms)	TBD

Guest rooms do not include parking and are subject to applicable taxes.

Rates include towel service every other day, linen changed every 4<sup>th</sup> day and high speed wired internet.

In a quiet location on the west end of campus the three-level townhouses are ideal for families. The townhouse buildings offer guests their own self-contained "home away from home". Each unit has two full washrooms and furnished living rooms. Kitchens are equipped with toaster, kettle, stove, fridge and table for four. For an extra cost some Units are provided with a "kitchen kit" which contains pots, dishes, glassware, utensils and a coffeemaker. The townhouse units

have four individual locking bedrooms that include a single bed, bookcase, desk, chair, and wired Internet connection. Modern laundry rooms for guest use are located throughout the townhouse complex.



**Parking**

The rates for 2016 are provided below:

	Regular sized vehicle	Oversized vehicle	Bus
Daily	\$5.00	\$10.00	\$10.00
Weekly	\$25.00	\$50.00	\$70.00
Monthly	\$100.00	\$200.00	Not available